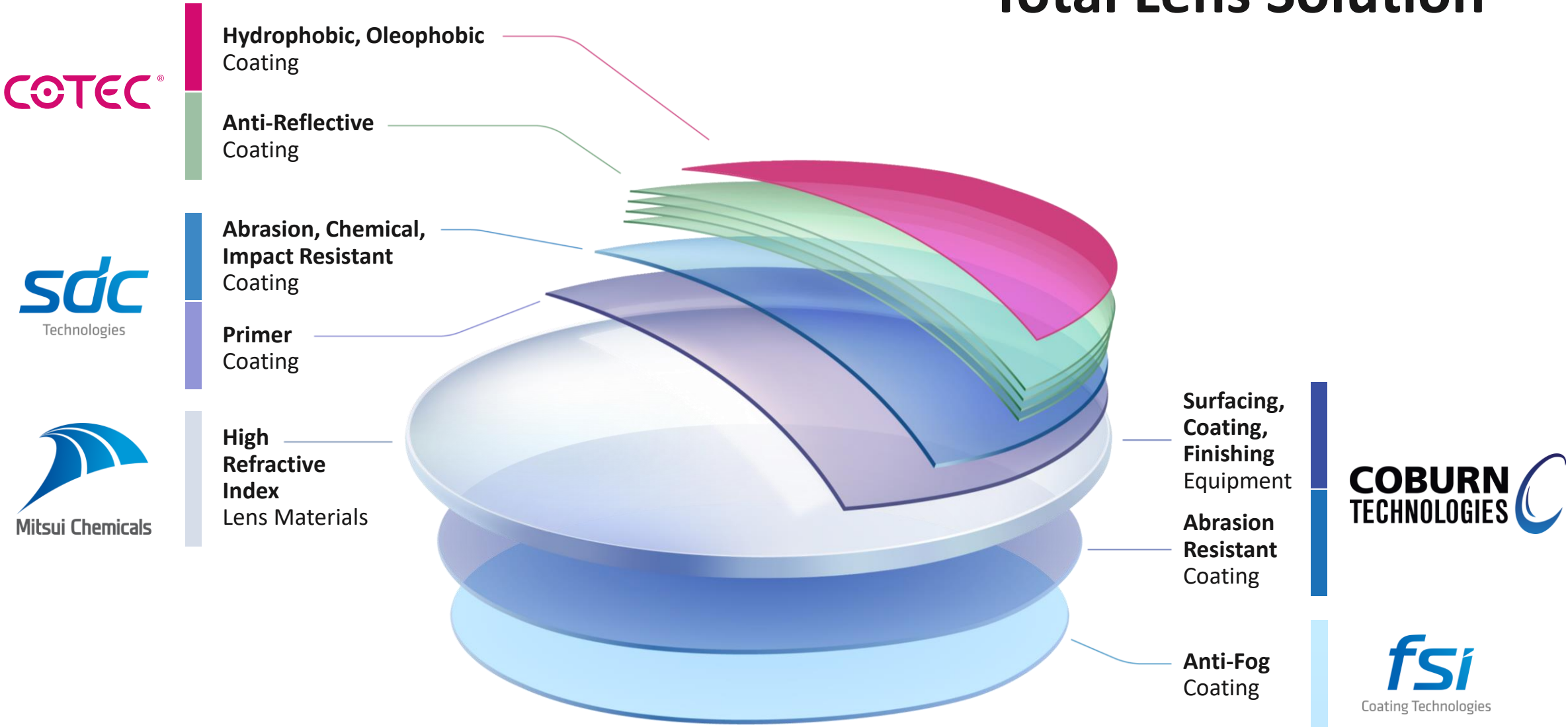


# Total Lens Solution



# Total Vision Care Solution

High-Performance Chemistry | High-Precision Processing



High Refractive Index  
Lens Materials



**SDC**

Coatings, Primers and  
Coating Equipment



**fsi**

Permanent Anti-Fog  
Coating Systems



**COTEC**

Thin-Film Technology  
Coatings & Equipment



**COBURN  
TECHNOLOGIES**

Lens Processing Systems,  
Coatings & Instruments



**Multiple Vision Care Companies • One Vision Care Partnership**

©2024 SDC Technologies, Inc. — Confidential  
SDC Technologies is a wholly-owned subsidiary of Mitsui Chemicals, Inc.



# Mitsui Chemicals

## The Global Standard for High Refractive Index Lens Materials

©2024 SDC Technologies, Inc. – Confidential



by Mitsui Chemicals

©2024 SDC Technologies, Inc. – Confidential

**Innovative materials for lenses that offer a balanced set of features:**

- Thinness and Lightness
- Impact Resistance
- Tintability
- Optical Clarity

## CrystalCoat®

### Anti-abrasion Resistant Coatings



- Chemical Resistant
- Index-Matched
- Impact Resistant
- Primers
- Scratch Resistant
- Tintable
- UV and Thermal Cure

## CrystalChrome®

### Photochromic Coating



- Fast Darkening and Fading Speeds
- Suitable for All Lens Materials
- Dip or Spin Coat Thermal Cure Process

## CrystalSpin®

### UV-Cure Spin Coating Equipment



- Solvent-free or Solvent-Based
- Designed to Clean, Coat and Cure Lenses



## Best-in-Class Anti-fog Coating Systems

NASA-approved Anti-fog for Space Helmets and Olympic Swim Goggles, and Proven in Premium Branded Eyewear

**Visgard<sup>®</sup>**

- **Hydrophilic**
- **Permanent Anti-Fog**
- **Thermal & UV-Cure**

**Vistex<sup>®</sup>**

- **Water-Washable**
- **Water-Sheeting**



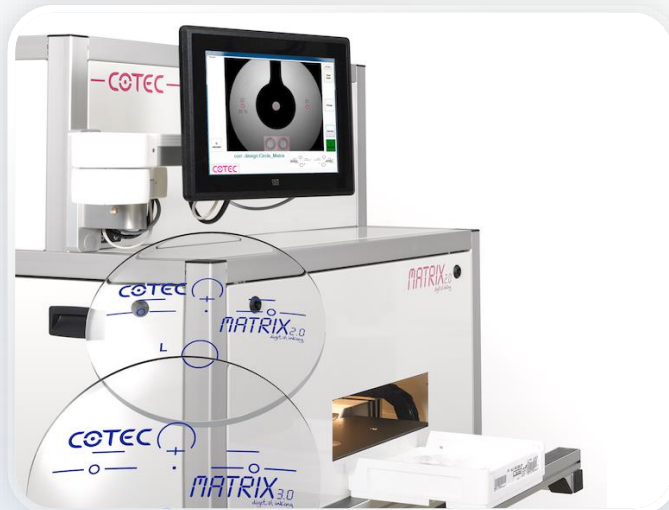
Materials | Vacuum | Coating

## Anti-reflective and other PVD Materials



- Enhanced Surface Properties
- Maximized Comfort
- Reduced Eye Strain

## Handling and Testing Systems and Equipment



- Printing
- Coating
- Evaluating

## Ultra Hydrophobic Coatings DURALON®



- Anti-Fingerprint
- Anti-Smudge
- Easy-To-Clean
- Durable



Ophthalmic Laboratory Lens Processing  
Equipment, Instruments, Coatings, &  
Consumables for All Phases of Lens Production

From eye care practices and small  
retail locations to automated  
wholesale laboratory facilities



## SURFACING

### Laboratory Surfacing and Coating Equipment

- Blockers
- Generators
- Polishers/Finers
- De-tapers/Cleaners
- Spin Coaters
- Deblockers
- Alloy Recovery
- Software



## FINISHING

### In-Office Lens Finishing Equipment

- Lens Edgers
- Lens Tracers
- Lens Blockers
- Drills



## OPHTHALMIC

### Exam Lane and Pre-testing Equipment

- Autorefractors/  
Keratometers
- Digital Refractors
- Lensmeters
- Slit Lamps
- Exam Lanes & Furniture
- Visual Acuity Charts
- Retinal Cameras
- Ocular Surface Analyzers



## COATINGS

### Hard Coatings

- UV Curable
- Solids Based
- Tintable
- Non-Tintable

**ProCoat**  
**UVMAX**  
**DURA-UV**



## CONSUMABLES

### Consumables

- Digital Surfacing  
Consumables
- Traditional Surfacing  
Consumables
- Finishing Consumables
- Coatings & Chemicals  
Consumables